

# MAPA ASPHALT NEWS

Missouri Asphalt Pavement Association

Summer 2015





# THE NEW VÖGELE VF 600 SCREED WITH FRONT-MOUNTED EXTENSIONS VERSATILE AND RIGID!



Close to  
our customers

Thanks to its sturdy design, the vibratory VF 600 Extending Screed is your perfect all-application screed. Whether paving highways, parking lots or residential areas, the VF 600 gives you the versatility of changing widths on the fly while holding adjustment and maintaining precise pavement profiles.



ROAD AND MINERAL TECHNOLOGIES

## Technical Highlights

- ▶ Basic width 10 ft.
- ▶ Hydraulically extending up to 19 ft. 6 in.
- ▶ Maximum paving width 25 ft. 6 in.
- ▶ Sloping extension up to 10%
- ▶ Innovative electric screed heating
- ▶ Hydraulic crown adjustment -2.5% to +5%
- ▶ Optional berm available in three widths (12, 18 or 24 in.)

**MURPHY**  
TRACTOR & EQUIPMENT CO.

### IOWA

Des Moines • 515-263-0055  
Fort Dodge • 515-576-3184  
Sioux City • 712-252-2753  
Waterloo • 319-235-7085

### KANSAS

Dodge City • 620-227-3139  
Great Bend • 620-792-2748  
Park City • 316-942-1457  
Topeka • 785-233-0556  
Ulysses • 620-356-1071

### MISSOURI

Kansas City • 816-483-5000  
Springfield • 417-863-1000

### NEBRASKA

Gering • 308-436-2177  
Grand Island • 308-381-0741  
Lincoln • 402-467-1300  
North Platte • 308-534-7020  
Omaha • 402-894-1899

[murphytractor.com](http://murphytractor.com)

# MAPA ASPHALT NEWS

The Asphalt News is produced quarterly and distributed to association members and others interested in Missouri's asphalt industry.

**Konn Wilson**  
*President*

**Brandon Finn**  
*Vice President*

**Don Rosenbarger**  
*Secretary-Treasurer*

**Jeff Bross**

**Randy Canfield**

**Keith Davenport**

**Brian Goggins**

**Phil Hoher**

**Brady Meldrem**

**Kyle Phillips**

**Shawn Riley**

**John View, III**

**David Yates**

---

**Dale Williams**  
*Executive Director*  
Mobile: (573) 690-9676  
Email: [dalewilliams@moasphalt.org](mailto:dalewilliams@moasphalt.org)

**Laura Markway**  
*Assistant Director*  
Mobile: (573) 301-3530  
Email: [lauramarkway@moasphalt.org](mailto:lauramarkway@moasphalt.org)

**Susan Brand**  
*Executive Assistant*  
Email: [susan@moasphalt.org](mailto:susan@moasphalt.org)

---

Mailing Address:  
P.O. Box 104855  
Jefferson City, MO 65110  
  
Street Address:  
1221 Jefferson  
Jefferson City, MO 65109

Phone: (573) 635-6071  
Fax: (573) 635-6134

## THE WAY I SEE IT

### 4 A Small Light at the End of the Tunnel

Prior to the United States Congress adjourning for their summer recess and passing the 34th short-term extension of the highway bill, the United States Senate passed a 6-year highway bill – The Drive Act.

## NOTEWORTHY NEWS

### 5 Say Hello to Our New Members

MAPA is PROUD to welcome three new city/county public works departments and two new consulting/engineering firms.

### 5 Follow MAPA on Facebook & Twitter

Facebook and Twitter are great ways for MAPA to foster relationships.

### 6 Asphalt Pavement Alliance Names New Director

Amy Miller, new national director of the APA, will be responsible for coordinating and leading education and field deployment efforts for the asphalt pavement industry.

## MAPA FEATURES

### 8 Annual Summer Social Continues to Grow

MAPA sincerely thanks those who attended as well as all the sponsors of this year's summer social event and we hope to continue growing it in years to come.

### 10 Member Profile

For 63 years, Ideker, Inc. has been offering public and private contracting services. They also offer the sale of hot mix products along with aggregate products. Other services they offer include conventional paving, spray paving and milling.

*Cover photo credit: N.B. West Contracting Company*

To see more Missouri asphalt facts, visit [moasphalt.org](http://moasphalt.org)



## *The Drive Act* A SMALL LIGHT AT THE END OF THE TUNNEL

When I think about transportation funding and all of the obstacles we have faced trying to find a long term solution, I start to feel like Bill Murray's character in the movie "Groundhog Day." It seems as if we have been down countless rabbit holes, chasing an elusive solution, only to come up short-handed time-after-time. As I write this piece, there seems to be a small flicker of light at the end of the tunnel. Prior to the United States Congress adjourning for their summer recess and passing the 34th short-term extension of the highway bill, the United States Senate passed a 6-year highway bill – The Drive Act. The Senate passed version of the bill includes a 3% annual increase in funding; however, they have only funded the bill for three years. The House is expected to take up the bill shortly after they return from summer recess in late September. At this time it is unclear what direction the House will go. The biggest issue with the House is how to pay for the new bill. I am certain there will be a great deal of debate once the House reconvenes, but we are now at a place we haven't seen in a long, long time. We have a 6-year bill that has passed the Senate, and now we as an industry, must do all that we can to get the House to pass the bill. If we fail to pass the Drive Act this year, we are certain to see a number of short-term extensions through the end of 2016 and, as you all know, next year is an election year. So act now, contact your Congressmen and urge them to support the Drive Act and hopefully when we wake up tomorrow it will be February 3rd and that flicker of light we see at the end of the tunnel isn't a train.



**Executive Director**  
Dale Williams



**ULTRAPAVE**  
DEFINER OF TEXTILE REINFORCED AND CERAMIC ASPHALT

SBR Polymers for Hot Mix  
Antistrip Polymers for Asphalt (UP5000)

John Murphy  
706-618-3625  
1300 Tiarco Drive SW  
Dalton, GA 30721



*Hot Oil on Time*

**Coastal Energy Corporation**  
Paving the way since 1979

1 Coastal Drive  
Willow Springs, MO 65793  
417-469-2777  
www.coastal-fmc.com



**vancebrothers®**

Bringing Integrity to the Surface.®  
KANSAS CITY, MISSOURI 800-821-8549  
***On the job for over 90 years!***



- POLYMER MODIFIED ASPHALTS
- EMULSIFIED ASPHALTS
- CUTBACK ASPHALTS
- MICROSURFACING
- CHIP AND SLURRY SEAL
- GEOTEXTILES/PAVING FABRIC INSTALLED
- PREMIUM COLD MIXES
- CRACKSEALANTS



**WWW.VANCEBROTHERS.COM**





## ***Announcement***

### **SAY HELLO TO OUR NEW MEMBERS**

MAPA is PROUD to welcome three new city/county public works departments and two new consulting/engineering firms. We will work closely with these new members to develop a Public Works Consultants Committee that will address design mix inconsistencies, asphalt maintenance and preservation, and additionally provide new ideas to assist them in establishing MAPA as their go to resource.

Members are encouraged to contact Laura Markway via email at [lauramarkway@moasphalt.org](mailto:lauramarkway@moasphalt.org) or by calling 573-645-6071 to set up meetings with your local city/county officials.

Please feel free to reach out to our new members and offer them a warm welcome to MAPA.

- **City of Lebanon, MO**  
**Mike Moore**  
PO Box 111  
1401 West Commercial  
Lebanon, Mo 65536  
(417) 588-6090 ext. 1390  
[mjmoore@lebanonmo.org](mailto:mjmoore@lebanonmo.org)
- **Central Missouri Professional Services, Inc.**  
**Mike Bates**  
2500 E. McCarty Street  
Jefferson City, Mo 65101  
(573) 634-3455  
[mbates@cmps-inc.com](mailto:mbates@cmps-inc.com)
- **Cole County Public Works**  
**Eric Landwehr**  
5055 Monticello Drive  
Jefferson City, Mo 65109  
(573) 636-3614  
[elandwehr@colecouny.org](mailto:elandwehr@colecouny.org)
- **Engineering Surveys & Services**  
**Chris Yarnell**  
802 El Dorado  
Jefferson City, Mo 65101  
(573) 645-8352
- **Jefferson City Public Works**  
**Britt Smith**  
320 E. McCarty St.  
Jefferson City, Mo 65101  
(573) 634-6410  
[bsmith@jeffcitymo.org](mailto:bsmith@jeffcitymo.org)

## **DID YOU KNOW**

The U.S. recycles about 2 million tons of plastic a year while recycling and reusing over 60 million tons of asphalt.

### ***Social Media*** **FOLLOW MAPA ON FACEBOOK & TWITTER**

[www.facebook.com/MoAsphalt](http://www.facebook.com/MoAsphalt)

<https://twitter.com/moasphalt>

Social Media Marketing is the driving force of all modern marketing and sales campaigns regardless of what industry you are in. Facebook and Twitter are on the cutting edge when it comes to branding and promotion of various products and services for the whole world to see. MAPA employs both of these media marketing streams. They are a great way for us to foster relationships with membership, industry partners, elected officials and the general public.

Please take the time to "Like" our Facebook page and follow us on Twitter. Don't be afraid to interact

with us and let us know how we're doing. We value your comments, likes, shares, retweets and tags. See you on the world wide web!



## *Asphalt Pavement Alliance* **AMY MILLER ASSUMES NEW ROLE AS NATIONAL DIRECTOR**

The Asphalt Pavement Alliance (APA) named Amy Miller, P.E., as its new National Director. She was introduced at the annual summer meeting of the State Asphalt Pavement Associations (SAPA) in Williamsburg, VA.

Miller, a professional engineer licensed in Florida, has an extensive background in pavement design and pavement type selection issues. As national director of the APA, she will be responsible for coordinating and leading education and field deployment efforts for the asphalt pavement industry, working in close cooperation with the Asphalt Institute (AI) in Lexington, KY, the National Asphalt Pavement Association (NAPA) in Lanham, MD, and the 40 state associations.

“I look forward to working with the APA’s partners to highlight exactly how asphalt pavements are the material of choice for ensuring quality, comfort, and value for the driving public and road owners alike,” Miller said.

Miller earned her bachelor’s in environmental engineering and a master of business administration from the University of Florida. She is a past-president of the Florida Structural Engineers Association, and has experience working as a consulting engineer, for a building materials supplier, and with a construction trade association.

“Having Amy guide and support the industry’s field deployment efforts will help reinforce all the state-level work our associations do to ensure the public gets the best value possible out of the roads they use every day,” said Richard J. Schreck, Executive Vice President of the Virginia Asphalt Association and 2015 SAPA Chairman.

“As an industry, we spend considerable resources on engineering, research, and development with a focus on quality. Amy will help ensure that this important work is put to use in the field,” said Peter Grass, President of AI.

“The asphalt pavement industry is moving forward with many advancements that boost sustainability and pavement performance,” said Mike Acott, President of NAPA. “We are excited to have someone of Amy’s caliber leading our efforts to put these innovations in front of road owners and decision makers.”



---

As national director of the APA, she will be responsible for coordinating and leading education and field deployment efforts for the asphalt pavement industry.

---

# COMING SOON

- September 30, 2015  
**Annual MAPA-REF Golf Tournament**
- October 27-28, 2015  
**MACTO Conference Kansas City**
- November 3, 2015  
**MAPA/MODOT Quarterly Meeting**
- November 9-10, 2015  
**Rolla Asphalt Conference**
- November 15-16, 2015  
**Missouri Association of Counties Conference**
- November 30, 2015  
**Paving Awards Application Deadline**
- January 11-13, 2016  
**MAPA Annual Conference**



**Dynapac asphalt rollers and pavers**

#### **CC424HF, CC524HF and CC624HF articulated tandem asphalt rollers:**

- Designed for ease of use and maximum efficiency
- High frequency vibration is standard on all models
- Environmentally friendly iT4 engine

#### **F1000 series wheeled or tracked asphalt pavers:**

- Equipped with a powerful Cummins QSB 6.7 liter iT4 engine
- High-pressure fuel injection system reduces fuel consumption by up to 5% over earlier engines
- Ensure superior mat appearance, density and smoothness from a well-balanced tractor and proven screeds



#### **Luby Equipment Services**

Fenton, MO 636-343-9970  
Cape Girardeau, MO 573-334-9937  
Quincy, IL 217-222-5454

[www.lubyequipment.com](http://www.lubyequipment.com)



#### **The Victor L. Phillips Company**

Kansas City, MO 816-241-9290  
Springfield, MO 417-887-2729  
Joplin, MO 417-781-8222  
Topeka, KS 785-267-4345  
Wichita, KS 316-838-3346  
Garden City, KS 620-275-1996

[www.vlpco.com](http://www.vlpco.com)

## **DYNAPAC**

Part of the Atlas Copco Group





## MAPA Event

### ANNUAL SUMMER SOCIAL CONTINUES TO GROW

AHOY MATEY! There was no need to batten down the hatches this year. MAPA's 2nd Annual Summer Social grew from the previous year and proved to be just as entertaining. Thursday's events started off with a marketing committee meeting followed with a Board of Directors meeting. After adjourning, 86 producer and supplier member representatives and their families set sail on a cruise around Table Rock Lake aboard an 85 ft. vessel, complete with Captain and three crew members. Crew mates made sure beverages were cool, while the children played games below deck or took a turn at the Captain's wheel, complete with a Captain's hat.

A cocktail hour with hors d'oeuvres was followed by dinner and dessert in the grassy courtyard overlooking Table Rock Lake. A beautiful sunset set the stage for the night's entertainment. Gary Welch was back to serenade MAPA guests and even allowed a few special guests singers to chime in.

Friday morning, several MAPA members took to Branson Hills Golf Course, formerly known as Payne Stewart Golf Course, to try their hand at mastering the greens.

MAPA sincerely thanks all the sponsors of this year's event and we hope to continue growing it in years to come.

### THANK YOU TO OUR SPONSORS

- |                         |                             |                   |
|-------------------------|-----------------------------|-------------------|
| • MeadWestvaco          | • APAC-Missouri             | • NB West         |
| • Hutchens Construction | • Getz Recycling Equipment  | • Akzo Nobel      |
| • Missouri Petroleum    | • Berry Tractor             | • Heatec Inc.     |
| • Phillips66            | • Foley Equipment           | • Delta Companies |
| • Byrne & Jones         | • Unique Paving Materials   | • Roadtec         |
| • FabickCAT             | • Coastal Energy Corp       | • GW VanKeppel    |
| • Murphy Tractor        | • Fred Weber, Inc.          | • Prestige Powers |
| • InVia Pavement        | • CMW Equipment             |                   |
| • Herzog                | • Ergon Asphalt & Emulsions |                   |





To see the complete 2015 Summer Social photo album, please visit [www.facebook.com/MoAsphalt](http://www.facebook.com/MoAsphalt). Be sure to "LIKE" our page while you there!



## *Member Profile* **IDEKER, INC.**

Since 2007, Ideker, Inc. has been a member of the Missouri Asphalt Pavement Association. In that time, Ideker, Inc. has won several MAPA Quality Awards including Quality of Paving for Primary Route Under 50,000 tons in 2014 and 2013, Quality of Paving for Minor Road Overlay, 2014, Quality of Paving-Airport Paving 2014, Quality of Paving-Municipal, 2014, Quality Paving for 50,000 ton or more in 2011 and 2012. In addition, Ideker, Inc. has received the prestigious AGC of America Quality Award for 50 years of commitment to the construction industry. MAPA is proud to have Ideker, Inc. involved in our association. Jack Neel, Asphalt Division Manager also serves on MAPA Technical Committee.

Ideker, Inc. got its start in 1952 in Mound City, Missouri by Welton Ideker, the grandfather of current President Paul Ideker. It began by making repairs to the Missouri River levees that had breached during flooding. Operations expanded in 1958 to include construction of interstate highways and again in 2006 with the addition of asphalt paving. Proudly owned and operated by three generations, Ideker, Inc. specializes in heavy construction, asphalt paving, concrete paving and quarry operations around the Kansas City Metro Area. They serve seven counties with two dual drum counter flow asphalt plants in Jackson County and Clay County Missouri.

For 63 years, Ideker, Inc. has been offering public and private contracting services. They also offer the sale of hot mix products along with aggregate products. Other services they offer include conventional paving, spray paving and milling.

Ideker's central management is at the main office in St. Joseph, Mo. On average, 125 employees of Ideker, Inc. help fulfill the promise of providing quality products meeting all specifications on both time and budget while providing employees a stable and safe work environment. All senior management of Ideker, Inc. live and work in the community. They are active in the schools, churches and community organizations while donating to numerous charities.

Again, MAPA is pleased to have Ideker, Inc. as a valued member of our association.





---

For 63 years, Ideker, Inc. has been offering public and private contracting services. They also offer the sale of hot mix products along with aggregate products. Other services they offer include conventional paving, spray paving and milling.

---



**With Keystone's Wedgelock Drum...  
The Choice Is Yours  
Standard Mill, Fine Mill  
And Micro Mill**

**WITH THE  
SAME DRUM**

**KEYSTONE ENGINEERING**

317-271-6192  
keystonecutter.com

Wedge Lock Drum with single blocks - 5/8" standard spacing  
Wedge Lock Drum with triple blocks - 2/10" micro spacing

**CMW**  
Equipment

8668 Olive Blvd  
St. Louis, MO 63132  
800-283-1336  
314-993-1336

[www.cmw-equip.com](http://www.cmw-equip.com)

*Over 60 years of dependability supported by:*

**BLAW KNOX PAVERS, ROAD WIDENERS**

**ATLAS COPCO AIR COMPRESSORS**

**SUPERIOR BROOMS MAULDIN DISTRIBUTORS/PAVERS**

**GORMAN RUPP PUMPS CARLSON**

**STEWART AMOS SWEEPERS**

**VOLVO ROLLERS ABG PAVERS**

**Sales \* Rental \* Service \* Parts**

**Need  
Equipment?  
Choose Roland**

**ROLAND  
MACHINERY CO.**  
*Komatsu Distributor*

*Reliable Equipment • Responsive Service  
24-Hour On-site Emergency Service Available*

**Call The Location  
Nearest You!**

<b>Bridgeton</b> 314-291-1330	<b>Columbia</b> 573-814-0083
<b>Cape Girardeau</b> 573-334-5252	<b>Palmyra</b> 573-769-2056

**KOMATSU®**

**HAMM** **ROSCO** **LeBo**

**VÖGELE** **Wirtgen** **TRAMAC**

15 locations throughout WI, IL, IN, MI, and MO

**For funding of your next project.  
Look to the Commercial Loan  
experts at**

**Hawthorn**  
BANK®

**1-877-4HAWTHORN**

**Kansas City**  
**Columbia**  
**Jefferson City**  
**Springfield**  
**Branson**

**Member FDIC** [www.HawthornBank.com](http://www.HawthornBank.com) **NASDAQ: HWBK**

**#17**

Constructing a Perpetual Pavement today means that future generations will probably never need to replace the pavement structure.





### Asphalt Mixture

- Superpave Volumetric Mix Design
- Marshall Mix Design
- Stone Mastic Asphalt Design
- Recycle Materials (RAP, RAS) Analysis
- Ultra-Thin Bonded Wearing Course Design
- Hamburg Loaded Wheel Test
- Asphalt Pavement Analyzer
- Moisture Damage Susceptibility Testing
- Profilograph Services
- Field and Engineering Service

**Office Phone:** 573-406-1383

**Fax:** 573-406-1398

**Email:** [infoptlabs@gmail.com](mailto:infoptlabs@gmail.com)

[www.premiertestinglab.com](http://www.premiertestinglab.com)

### Asphalt Binder

- AASHTO M320 and MP19 PGB Verification and Classification Testing
- Asphalt Extraction Testing using Trichloroethylene
- Many other specialized testing capabilities



**Pete Martin**  
[PRMartin@FoleyEQ.com](mailto:PRMartin@FoleyEQ.com)  
O: (785) 825-4661  
C: (785) 488-7757



**Randy Jordan**  
[RDJordan@FoleyEQ.com](mailto:RDJordan@FoleyEQ.com)  
O: (785) 266-5770  
C: (785) 256-1306

With over 55 years of paving experience between them, Randy Jordan and Pete Martin have experience in every aspect of the paving business including fleet management and maintenance, machine acquisition and life cycle management, work flows, resource allocation and profitable operations.

**Give them a call for information and advice on the entire line of Cat® and Weiler paving machines.**



**FOLEY**  
EQUIPMENT



[FoleyEQ.com](http://FoleyEQ.com)

## Advertiser's Index

Coastal Energy Corporation .....	4
CMW Equipment .....	12
Fabick .....	14
Foley Equipment.....	13
Hawthorn Bank.....	12
Keystone Engineering .....	12
Luby/Dynapak.....	7
Missouri Petroleum.....	16
Murphy Tractor & Equipment Co. ....	2
Premier Testing Laboratories, LLC .....	13
Roland Machinery Co. ....	12
Ultrapave .....	4
Vance Bros Inc. ....	4

## PAVING ROADS ALL DAY EVERY DAY!



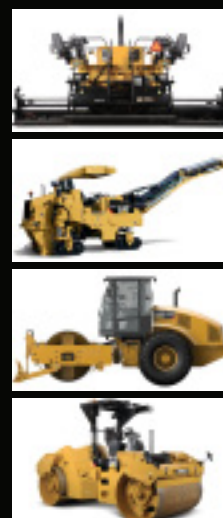
At Caterpillar Paving Products, all we think about is paving. Worldwide, no other manufacturer has more people dedicated to helping paving customers increase productivity, quality and profitability than Caterpillar.

Fabick provides the products and on-site support needed to improve your profitability. So you can bid with confidence, pave with efficiency and deliver on those non-negotiable performance specs.

Caterpillar is committed to your success. So is Fabick Cat. They are always there with financing, maintenance programs, parts and services needed to keep your equipment and crew on schedule. Or maybe ahead of it.

Toll Free: 1-800-585-7894  
www.fabickcat.com

"To Ever Serve Our Customers Better."



**NEW  
USED  
RENTAL  
SERVICE  
WE DO IT ALL**



**FABICK**





# MAPA MEMBERS

The contractor's skill, experience and equipment relates directly to the ultimate quality of your asphalt paving project. Producing top quality work is the hallmark of MAPA's members. Whether you're building a highway, street, parking lot or driveway, look to a MAPA member. We'll be happy to show you the way.

---

## **Producer**

APAC Missouri Inc.  
Delta Asphalt/Apex Paving  
Chester Bross Construction  
Fred Weber, Inc.  
G&M Concrete & Asphalt Company  
Herzog Contracting Corporation  
Hutchens Construction Company  
Ideker, Inc.  
Jefferson Asphalt Company  
Leo Journagan Construction Company  
N.B. West Contracting Company  
Norris Asphalt Paving  
Pace Construction Company  
Simpson Materials Company  
Superior Bowen Asphalt Company  
Willard Asphalt

## **Non-Producer Paver**

Byrne & Jones Construction  
Ford Asphalt Company  
Gevers Paving  
Leritz Contracting, Busy Bee Paving  
L. Krupp Construction Company  
Seal-O-Matic Paving

## **Bituminous**

Coastal Energy  
Ergon Asphalt & Emulsions  
Flint Hills Resources  
Heartland Asphalt Materials  
Missouri Petroleum Products, Inc.  
Phillips 66 Asphalt

## **Aggregate**

Ash Grove Aggregates  
Boone Quarries/Norris Quarries  
Bussen Quarries  
Holliday Sand and Gravel  
Hunt Martin Materials  
Southeast Missouri Stone Company,

## **County & City**

City of Lebanon, MO  
Cole County Public Works  
Jefferson City Public Works  
State Technical College of Missouri

## **Engineering/Consulting**

Central Missouri Professional Services  
Engineering Surveys & Services

## **Associate**

Akzo Nobel  
Antigo Construction Inc.  
Asphalt Drum Mixers, Inc.  
Asphalt Shingle Grinding Services  
Astec Industries  
Barker, Phillips, & Jackson Inc.  
Berry Tractor & Equipment  
BOMAG Americas  
Buildex, Inc.  
CMW Equipment  
Central Power Systems and Services  
ChemStation  
Dustrol, Inc.  
FabickCAT  
Foley Equipment  
Frankfort Testing Laboratory  
Getz Recycling Equipment, LLC

G.W. Van Keppel Co.  
Hansen RAS, LLC  
Heatec, Inc.  
InVia Pavement Technologies  
Lockton Companies  
Luby Equipment Services  
Maxam Equipment  
Meyer Laboratory  
Mississippi Lime Co.  
Murphy Tractor & Equipment Co.  
MWV Asphalt Innovations  
Pavon Corp.  
Petro Logistics, LLC  
Premier Testing Labs  
Road Science, Division of  
ArrMaz Custom Chemicals  
Roadtec, Inc.  
Roland Machinery Co.  
Scotwood Industries, Inc.  
SealMaster of Saint Louis  
Spirit Asphalt Inc.  
Tarmac International, Inc.  
Transwest Truck Trailers  
Ultrapave  
Unique Paving  
Universal Lubricants/RS Used Oil  
Services  
Victor L. Phillips Co.  
Wright Asphalt Products Co.



P.O. Box 104855  
Jefferson City, MO 65110  
(573) 635-6071

PRSRT STD  
U.S. Postage  
**PAID**  
Jefferson City, MO  
Permit 89

# Missouri Petroleum

Preserving Pavements with Innovative Solutions since 1932

**Asphalt Emulsions  
& Cutbacks**

•  
**Micro Surfacing  
Slurry Seal**

•  
**Chip Seal**

•  
**Asphalt Underseal**

•  
**Tire Rubber Modified  
Asphalt Sealer**

•  
**Paving Fabric  
Interlayers**

•  
**Geotextiles & Geogrid**

•  
**Rainstore Systems**

•  
**Porous Paving  
Systems**

•  
**Crack Sealants**

•  
**Endurablend Pavement  
Coatings**

**314-219-7305**

**[www.MissouriPetroleum.com](http://www.MissouriPetroleum.com)**

